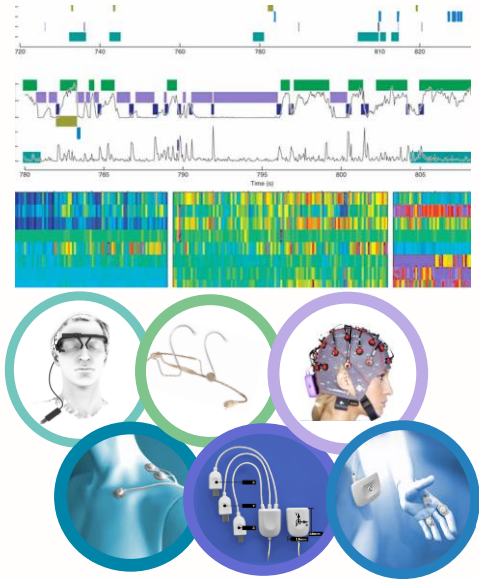


Bachelor-/Master-Thesis

Real-time Human Activity Recognition Using Smartphones

Tasks:

- Our wearable sensor-based real-time Human Activity Recognition (HAR) system works well on a PC and can also run on a Raspberry Pi. Your work is to implement an Android phone version of the real-time HAR system. The preliminary completed programs that can be used are
 - 1) biodevice connection and sensor signal acquisition on Android phones;
 - 2) model training and decoding for real-time HAR on PCs.



Our Offer:

- Insight in current research topics and scientific collaborative work
- Experimental environment in an interdisciplinary team
- Close cooperation with famous research and industrial partners
- Participation in publishing

Requirement:

- Android programming skills
- Network and server transport protocols and programming
- Python experience is preferred but not a must
- Preliminary knowledge of machine learning such as Hidden Markov Model

When:

- As soon as possible

KONTAKT:

Name: Dr.-Ing. Hui Liu

Telefon: 0421 – 218 – 64278

E-Mail: hui.liu@uni-bremen.de

Raumnummer: Cartesium 2.51