

**STUDY WITH US**

UNIVERSITY OF PADOVA

FOUNDED IN  
**1222**

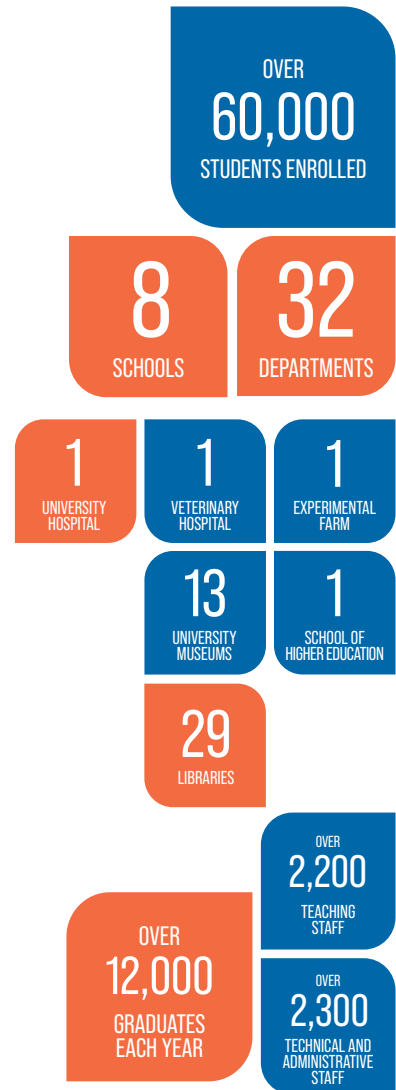
# THE UNIVERSITY

The University of Padua is a world-leading research-intensive university that has been driving global change since its foundation in 1222. Loyal to its motto **Universa Universitas Patavina Libertas** (Paduan freedom is universal for everyone), it has always been a bastion of free thought, study and research.

During eight centuries, students, researchers and alumni have provided key contributions to the advancement of knowledge, science and society: **Nicolaus Copernicus** and **Galileo Galilei** are among the fathers of modern science, **Andreas Vesalius** and **William Harvey** founded modern Medicine and **Elena Lucrezia Cornaro Piscopia** became the world's first woman to graduate in 1678.

The University of Padua is today a multidisciplinary institution with 8 Schools and 32 Departments offering a broad and comprehensive portfolio of programmes, ranging from Engineering to Business and Political Sciences, from Medicine to Humanities, from Psychology to Agriculture, from Law to Science.

The 4 Departments of the School of Agriculture and Veterinary Medicine are located in the Agripolis campus, less than 10km far from downtown Padua. Other research and teaching

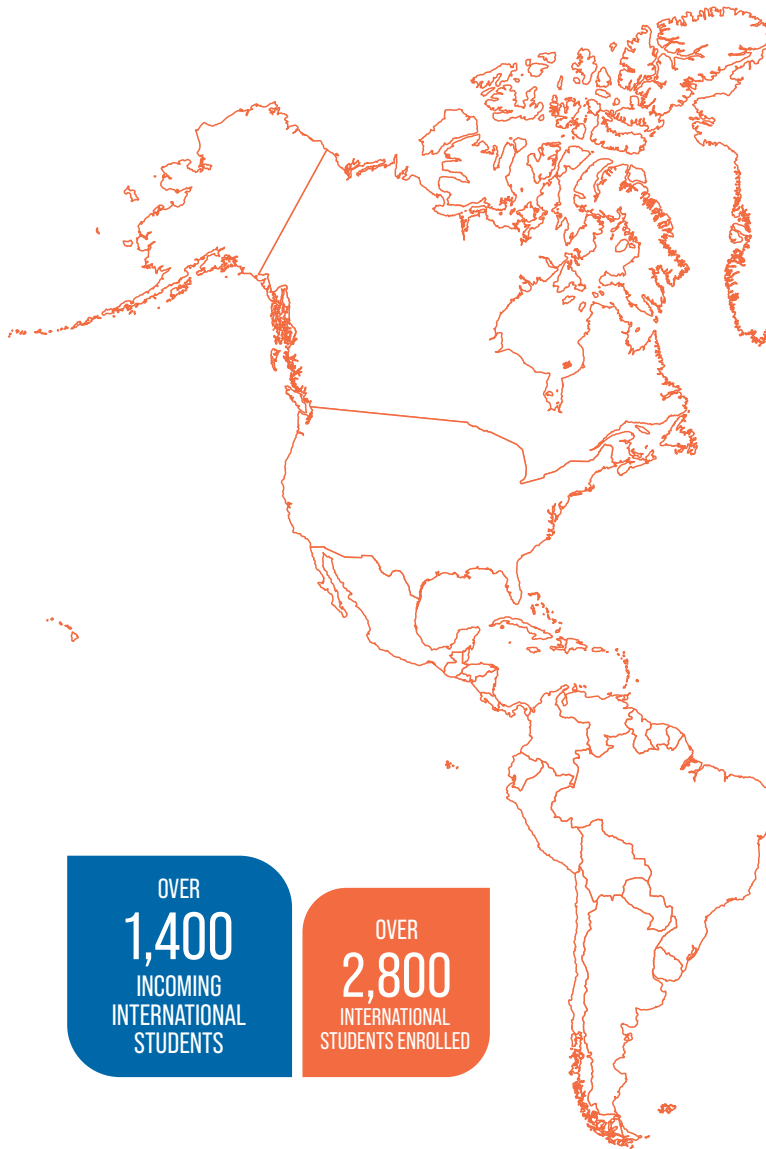


## THE UNIVERSITY

facilities are situated in various towns of the Veneto region, such as Vicenza, Treviso, Rovigo, Chioggia-Venice etc. Students benefit from world-class educational institution and enjoy an exciting student life in Padua, where they build long-lasting relationships and grow personally, academically and professionally.

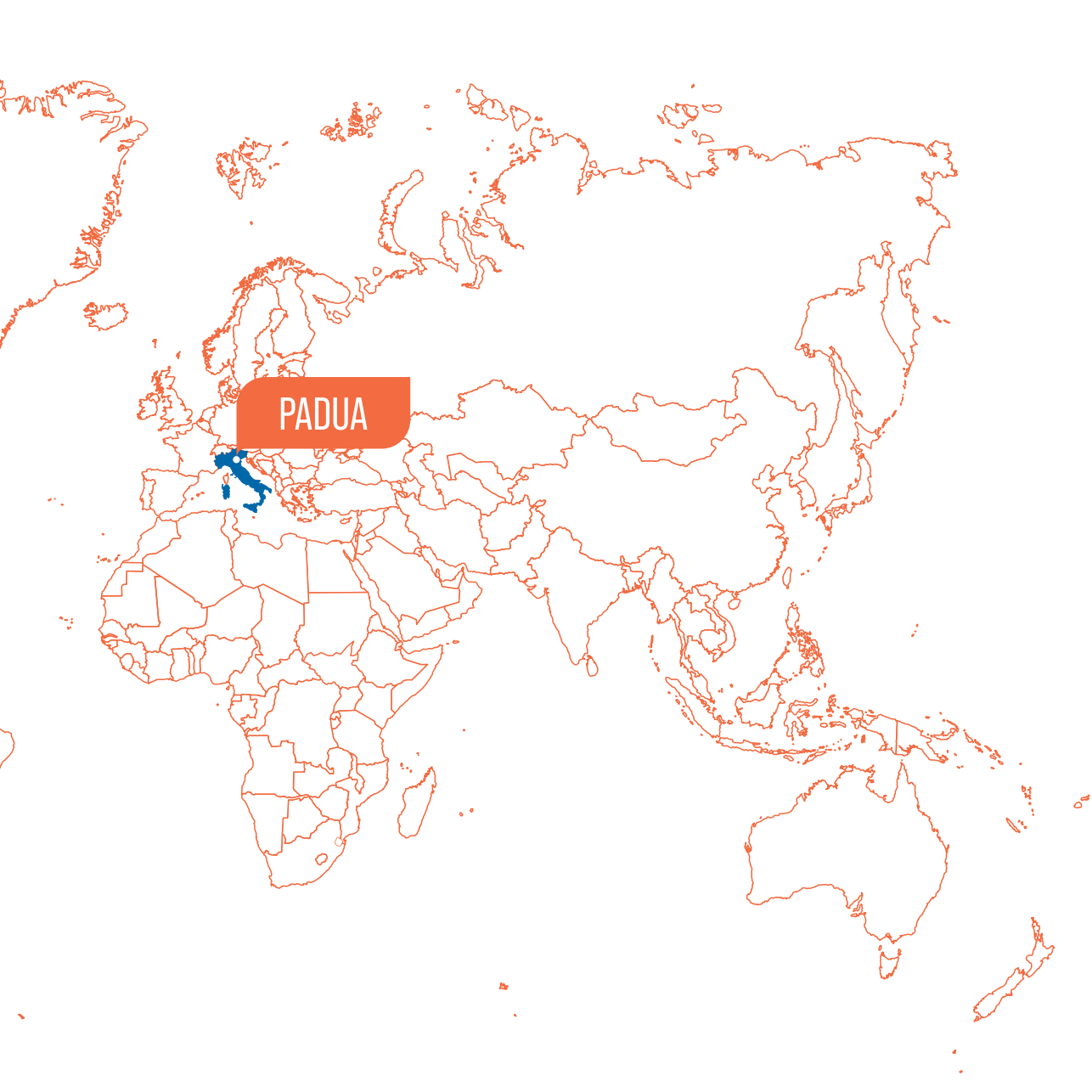
Graduates are global citizens that succeed in all professional fields and bring their expertise and dedication to excellence into the world. A degree from the University of Padua is recognised as a prestigious achievement in the labour market worldwide.

The University is also the scientific and cultural heart of Italy's industrious North-East, providing highly specialised training for the area's 5-million-plus residents and its 400,000-plus companies, a role made possible by its extensive network of campuses located across the Veneto region.



OVER  
**1,400**  
INCOMING  
INTERNATIONAL  
STUDENTS

OVER  
**2,800**  
INTERNATIONAL  
STUDENTS ENROLLED



PADUA

# 10 REASONS FOR STUDYING IN PADUA

## A BROAD RANGE OF MULTIDISCIPLINARY COURSES

Padua offers a broad and comprehensive portfolio of programmes; interconnections among the different disciplines generate a vibrant and stimulating learning environment.

## SUPERIOR EDUCATION

The University of Padua is a TOP 250 university in the world. It is also recognised as the best university in Italy for teaching quality (based on the 2018 evaluation of ANVUR, the Agency of the Italian Ministry of University and Research in charge of assessing university performance). It provides a solid academic background and excellent training, ensuring that graduates can brilliantly succeed in their professions.

## A LEADING INTERNATIONAL UNIVERSITY FOR RESEARCH

The University of Padua is one of the most cited universities in the world. Academic staff develop ground-breaking research tackling global challenges and supporting the advancement of knowledge, science and society. The University is recognised as the best university in Italy for research quality (ANVUR 2018).

## SERVICE QUALITY

90% of students are highly satisfied with their academic career and student experience at the University of Padua (National Graduate Survey, Almalaurea 2019).

## ONE OF EUROPE'S OLDEST AND MOST RENOWNED UNIVERSITIES

It was founded in 1222 by students and lecturers in a bid to spread freedom of thought within study and teaching. Since then, students, researchers and alumni have deeply contributed to the improvement of knowledge, science and society.

## AN INTERNATIONAL COMMUNITY

A large and vibrant international community of staff, students and alumni support the development of the University's missions at global level. The University participates in leading international networks, and its research and teaching projects involve lecturers from all over the world. Students can benefit from internationalised curricula and numerous study abroad opportunities.

## FINANCIAL INCENTIVES

Padua's fees are extremely competitive when compared with those of other top-ranking universities. The University of Padua grants a large number of merit-based and income-based scholarships sponsoring international students' tuitions and/or living costs.

## A STUDENT-CENTRED TOWN

The University affords a unique learning environment and is intertwined with the town and its layout. Its research centres, Departments and Schools are located across the town, and its students account for over 30% of the local population.

## A UNIQUE SETTING

Padua is a welcoming and charming city, ensuring one of the finest experiences of Italian arts, culture and lifestyle. It combines history, culture and art with thriving businesses in every sector.

## STRATEGIC POSITION

Efficient air, rail and road transportation links with the main cities in Italy and abroad international cities.

# RANKINGS



**RANKING 234**  
QS Ranking 2020



**EMPLOYABILITY RANKING 161-170**  
QS Ranking 2019



**RANKING 201-300**  
ARWU - Shanghai 2019



**RANKING 201-250**  
Times Higher Education 2019

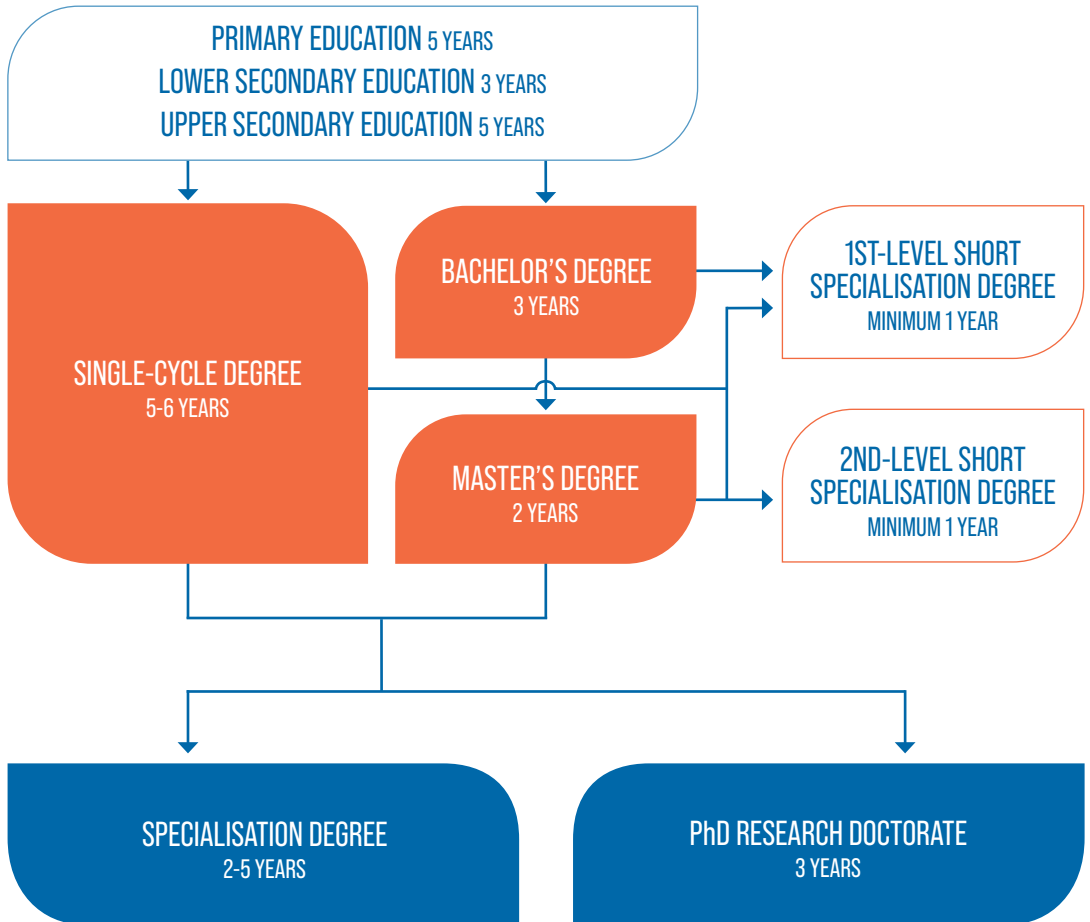


**RANKING 16**  
University Impact Rankings 2019



**RANKED A** (Highest score)  
by the Committee of Evaluation Expert  
of ANVUR (Italian National Agency of the  
Evaluation of Universities and Research  
Institutes) - 2019

# THE ITALIAN EDUCATION SYSTEM





## **BACHELOR'S DEGREE** **LAUREA**

Provides a solid background in general methods and content, as well as in specific professional skills.

**Admission requirements:** at least 12 years of prior education

**Leads to:** Master's degree; 1st-level short specialisation degree

**Duration:** 3 years - 180 ECTS\*

## **SINGLE-CYCLE DEGREE** **LAUREA MAGISTRALE** **A CICLO UNICO**

Ensures advanced training for regulated professions (e.g. medical doctor, veterinarian, pharmacist) and activities requiring a high level of specialisation.

**Programmes:** Medicine and Surgery; Dentistry; Veterinary Medicine; Pharmacy; Chemistry and Pharmaceutical Techniques; Law; Building Engineering and Architecture; Primary Teacher Education

**Admission requirements:** at least 12 years of prior education

**Leads to:** PhD; specialisation degree; 1st-level and 2nd-level short specialisation degrees

**Duration:** 5 or 6 years - 300 or 360 ECTS\*

## **MASTER'S DEGREE** **LAUREA MAGISTRALE**

Provides advanced training for highly specialised professions in specific fields.

**Admission requirements:**

Bachelor's degree

**Leads to:** PhD; specialisation degree; 1st-level and 2nd-level short specialisation degrees

**Duration:** 2 years - 120 ECTS\*

## **SHORT SPECIALISATION DEGREE**

Builds on previously acquired knowledge to strengthen specific professional skills.

**Admission requirements:**

Bachelor's degree or Master's degree (for 1st-level short specialisation degree); Master's degree (for 2nd-level short specialisation degree)

**Duration:** at least 1 year - 60 ECTS\*

## **SPECIALISATION DEGREE** **DIPLOMA DI SPECIALIZZAZIONE**

Improves knowledge and skills for highly specialised professions, in Medicine, Psychology, Law, Veterinary etc.

**Admission requirements:** Master's degree; Single-cycle degree

**Duration:** a maximum of 5 years

## **PHD RESEARCH DOCTORATE** **DOTTORATO DI RICERCA**

Aims to teach students the correct method for advanced scientific research at universities and public or private businesses. Alternatively, it guarantees a high level of professional skills.

**Admission requirements:** Master's degree; Single-cycle degree

**Duration:** 3 years

\* European Credit Transfer System



# ENROLLING AT THE UNIVERSITY OF PADUA

International students who wish to pursue their education in Italy are always welcome at the University of Padua. Admission procedures vary in accordance with the applicant status (e.g. nationality, country of residence, qualification type).

The academic year starts on 1st October and ends on 30th September of the following year.

## ENROLLING IN BACHELOR'S, MASTER'S AND SINGLE-CYCLE DEGREES

Admission Calls for applications contain all the information needed to apply to a programme, including: number of admissible candidates, application and enrolment deadlines and methods, admission requirements and tests, etc. They are published annually on the University's website. The number of places available for each programme can be either **limited** (by the University itself, or on a national basis by the Italian Ministry of Education, University and Research, e.g. the Single-cycle degree in Medicine and Surgery) or **unlimited**.

The educational background of each candidate is checked and admission procedures may include a compulsory admission test.

[www.unipd.it/en/study-english](http://www.unipd.it/en/study-english)

(English-taught programmes)

[www.unipd.it/en/study-italian](http://www.unipd.it/en/study-italian)

(Italian-taught programmes)

### Application timeline:

- January-March and April-June (English-taught programmes)
- March-September (Italian-taught programmes)

Classes begin between the end of September and the first weeks of October and are organised either in semesters or in trimesters, according to the programme.

Information on timetables is available at:

[www.gestionedidattica.unipd.it/PortaleStudenti](http://www.gestionedidattica.unipd.it/PortaleStudenti)

## ENROLLING IN SINGLE COURSE UNITS

The University of Padua gives the opportunity to attend up to 5 individual course units per academic year and to sit the respective examinations without being enrolled in the complete programme.

Anyone can apply to single course units, even if already enrolled at a public or a private university in Italy (except for the University of Padua) or abroad.

A fee is charged for enrolment in each unit. Enrolment in single units is not available for all programmes.

[www.unipd.it/en/single-course-units](http://www.unipd.it/en/single-course-units)

## ENROLLING AT THE UNIVERSITY OF PADUA

### ENROLLING IN A PhD

The University of Padua strongly prioritises third-level education and has been recently expanding its support for research training, in order to ensure the highest standards. Complete descriptions of research fields, methods and selection criteria are available in the Call for applications published each academic year (usually in Spring) on the University's website.

[www.unipd.it/en/phd-programmes](http://www.unipd.it/en/phd-programmes)

### ENROLLING IN SHORT SPECIALISATION DEGREES

Postgraduate students can enrol in short specialisation degrees, a series of courses with limited places focusing on specific subjects. To check admission requirements, deadlines and available scholarships, students need to refer to the Call for applications of the course they are interested in, which is published annually on the University's website.

[www.unipd.it/en/short-specialisation-degrees](http://www.unipd.it/en/short-specialisation-degrees)

### GALILEAN SCHOOL OF HIGHER EDUCATION

The Galilean School of Higher Education is a unique opportunity to become part of a community, whose members are accommodated free-of-charge in a dedicated college, enjoying a series of opportunities and sharing their learning experience. This top-level educational path includes a Bachelor's or Master's degree at the University of Padua, seminars and

additional courses taught by internationally-renowned lecturers, professors and tutors, and individual guidance activities. Every year 30 students (8 for Humanities, 8 for Social Sciences and 14 for Natural Sciences) of any nationality are selected through a rigorous test for admission to the first year in the School. Moreover, up to 4 international students can be admitted to the first year of a Master's degree following selection with public Call for applications.

[www.unipd-scuolagalileiana.it/en](http://www.unipd-scuolagalileiana.it/en)

### MARCO POLO PROJECT

The Marco Polo project was set up to encourage Chinese students to acquire a proficiency level (B1/B2 of the Common European Framework) in Italian language through intensive courses in Italy, held from November to August.

Marco Polo candidates can then enrol in a study programme at the University of Padua following the standard admission procedures, without applying for a new visa.

[www.unipd.it/en/marco-polo-project](http://www.unipd.it/en/marco-polo-project)



# FUNDING AND FEES

## **DEGREE PROGRAMME FEES (BACHELOR'S, MASTER'S, SINGLE CYCLE DEGREES)**

Payment of university fees gives students access to all services provided by the University of Padua. The maximum fee depends on the programme, but it does not exceed 3,000 euros and it is divided into 3 instalments per year.

[www.unipd.it/en/tuition-fees](http://www.unipd.it/en/tuition-fees)

Tuition fees can also be reduced significantly. The following page summarises all the possibilities students have to apply for a reduced fee.

[www.unipd.it/en/fee-waivers](http://www.unipd.it/en/fee-waivers)

## **SCHOLARSHIPS AND AWARDS**

The University of Padua, the Veneto Region and other public or private institutions allocate a series of scholarships to support students.

Awards for specific categories (e.g. students with special sport or academic achievements) are available as well.

[www.unipd.it/en/scholarships](http://www.unipd.it/en/scholarships)

[www.unipd.it/en/awards](http://www.unipd.it/en/awards)

## **SHORT SPECIALISATION DEGREE COURSE FEES**

The Call for applications specifies the fee and the number of scholarships and awards of each course. Reductions are envisaged for students with disabilities and students from developing countries.

## **PhD FEES**

To attend a PhD programme, students need to pay a standard fee which is automatically deducted from their scholarship (if the candidate is granted one).



# A UNIQUE STUDENT EXPERIENCE

## ADMISSIONS AND WELCOME UNIT

The Admissions and Welcome Unit provides international students with information on the educational offer, scholarships and other services granted by the University. It supports students with the pre-enrolment and enrolment procedures, including the verification of entry requirements and the evaluation of foreign qualifications. The team welcomes international students upon their arrival and promotes welcome initiatives.

[www.unipd.it/en/international-relations](http://www.unipd.it/en/international-relations)

## CHINA DESK

The China Desk, launched in 2015, targets and supports collaborations with China. It offers a dedicated front-office for current and prospective Chinese students, plus supports and monitors projects with Chinese institutions and universities. The overseas office in Guangzhou further bridges the cultural and physical distance between the two Countries.

[www.unipd.it/cn](http://www.unipd.it/cn)

## SAOS

### (Servizio Accoglienza Ospiti Stranieri)

The SAOS office is dedicated to international students who need assistance on immigration-related procedures (visa, residence permit, health insurance, etc.).

[www.unipd.it/en/saos](http://www.unipd.it/en/saos)

## BUDDY

International students enrolling in a degree programme or spending a mobility period (e.g. Erasmus) in Padua are assigned a Buddy, i.e. a senior university student who will welcome and support them during their stay.

[www.unipd.it/en/buddy](http://www.unipd.it/en/buddy)

## CANTEENS

All students and staff can use the canteens managed by the ESU or other partners. Canteens are located in the city centre or near the main University buildings.

[www.unipd.it/en/canteens](http://www.unipd.it/en/canteens)

## GUIDANCE AND TUTORING

The study advice service helps prospective students to find the right academic path by discussing their cultural background, interests, aptitude and professional ambitions. The tutoring service supports enrolled students throughout their university career. Tutors help them to manage their study time, deal with examination planning, support the preparation and share learning experiences.

[www.unipd.it/en/study-support](http://www.unipd.it/en/study-support)

## HOUSING

During their university career in Padua, students can find accommodation:

- at **ESU residences**. Fees depend on income, merit and type of accommodation. An online Call for



applications is published every year at the beginning of the summer.

[www.esupd.gov.it/en](http://www.esupd.gov.it/en)

- in **private halls of residence**: Different prices and conditions are applied based on supplied services (e.g. half/full board). Some private residences reserve some places for international students.
- in **private flats**, possibly shared with other people. There are many specialised websites to search for private accommodation. An example is *HousingAnywhere*, an international housing platform where students, PhD candidates and trainees can safely book their new accommodation, offered by verified private landlords and by outgoing students.

[www.unipd.it/en/housing](http://www.unipd.it/en/housing)

## INCLUSION

Students with disabilities or Specific Learning Disabilities (SLD) have access to specific tools and services supplied by the University of Padua in order to overcome barriers and be as independent as possible in their studies. Students with a disability can also benefit from special scholarships and fee-waivers, based on family income, merit and disability level.

[www.unipd.it/en/students-special-needs](http://www.unipd.it/en/students-special-needs)

## LANGUAGE COURSES

The CLA (Centro Linguistico di Ateneo - University

Language Centre) promotes the learning of modern foreign languages and of Italian as a foreign language. It organises courses and learning activities, encourages self-learning initiatives, and carries out language assessment of any type and at any level. It features a media library, whose resources are accessible for free to all students and staff.

[www.cla.unipd.it/en](http://www.cla.unipd.it/en)

## LIBRARIES AND STUDY ROOMS

Thanks to 29 libraries within the University Library System, the University of Padua offers an extremely wide range of volumes, magazines, electronic scientific journals, e-books, sector-specific databases, and other multimedia products. Students are free to use any University study and computer rooms, in addition to library reference rooms.

[www.unipd.it/en/multimedia-facilities](http://www.unipd.it/en/multimedia-facilities)

## MEDIA

The University of Padua has a multimedia platform, *il Bo Live*, that serves both as daily newspaper and virtual notice board. The university radio station, *RadioBue.it*, is fully integrated in the platform.

[ilbolive.unipd.it](http://ilbolive.unipd.it)

## MUSEUMS

The University Museum Centre coordinates and promotes the activities of its 13 museums and 6

## A UNIQUE STUDENT EXPERIENCE

collections, an extremely diverse patrimony of scientific, artistic and historical artefacts, items and documents collected over the course of eight hundred years to support research and teaching activities.

[www.musei.unipd.it/en](http://www.musei.unipd.it/en)

### PSYCHOLOGICAL SUPPORT

The Psychological Assistance Service is a point of reference for students who encounter psychological issues during their studies (anxiety, relationship problems, academic performance). It provides **counselling**, valuable information, and support regarding addictions, so that students can play an active role in university life and reap the benefits of their studies.

[www.unipd.it/en/healthcare](http://www.unipd.it/en/healthcare)

### SPORT

Thanks to the CUS (Centro Universitario Sportivo - University Sports Centre), the University of Padua offers many possibilities to practice sport (e.g. athletics, rugby, volleyball, basketball, boat races) both at competitive and amateur levels in two sports facilities in Padua. Every year students can take part in the Ludi del Bo (tournaments for university students and staff) and in the National University Championships. The University supports students with disabilities willing to practice sport, especially

Paralympic disciplines. The University of Padua also grants some financial benefits to athlete-students with specific competitive sport merits.

[www.unipd.it/en/sport](http://www.unipd.it/en/sport)

[www.unipd.it/en/awards](http://www.unipd.it/en/awards)

### STUDENT ASSOCIATIONS

The University of Padua features several social, cultural and sport associations involving the university community and the citizens of Padua.

*International Student Council* is the representative association of international students at the University of Padua, providing support and promoting social interaction and cultural exchanges.

*Erasmus Student Network* (ESN) is a non-profit international student organisation that provides opportunities for cultural understanding and self-development under the principle of "Students Helping Students".

*Concentus Musicus Patavinus* is the centre for musical activities and live performances of the University, which includes various groups such as orchestra (classical), large choir, chamber choir, jazz band and contemporary dance.

Students and staff participate in many theatre companies, which promote acting courses, workshops and shows, even with a multilingual twist.

[www.unipd.it/en/associations](http://www.unipd.it/en/associations)



# INTERNATIONAL EXPERIENCES

The University of Padua provides all students with global perspectives during their studies, whether or not they spend time abroad. The **international dimension** of the University is witnessed both by the growing number of programmes completely held in English and by many spontaneous activities, such as countless international research cooperation projects. Students develop an international and intercultural approach thanks to an integrated teaching method that suggests a global vision on the key elements debated during the lessons. This modern perspective is ensured by a significant presence of international visiting scientists and professors from outstanding universities and research institutes. Becoming a student of the University of Padua means accessing to an open community, made of local and international students, as well as internationally mobile incoming students with many different cultural and educational backgrounds. The University of Padua is also a member of the *Coimbra Group*, an association of long-established European multidisciplinary universities of high international standard. The Coimbra Group is committed to creating special academic and cultural ties in order to promote internationalisation, academic collaboration, excellence in learning and research, and service to society.

[www.unipd.it/en/english-degrees](http://www.unipd.it/en/english-degrees)

## JOINT AND DOUBLE DEGREE PROGRAMMES

The University of Padua offers a variety of international joint and double degree programmes in cooperation with key partners worldwide.

The programmes are based on complementary courses at the partner universities, which offer their leading expertise to the students.

Students enrolling in such programmes spend one or more semesters at a partner university and acquire either a single qualification jointly signed by both academic institutions (**joint degree**) or the final national qualifications of the involved institutions (**double degree**). Among others, *Erasmus Mundus Joint Master Degrees* are an example of joint courses, where students are required to attend modules in at least two Higher Education Institutions in two different countries. At the end of the course, successful students will be awarded a double, multiple or joint degree. Another initiative is the *Top Industrial Managers for Europe* (TIME), addressed specifically to engineering students. It gives them the opportunity to attend a three-year integrated learning path, one in Padua and two at prestigious partner universities.

[www.unipd.it/en/joint-and-double-degree-programmes](http://www.unipd.it/en/joint-and-double-degree-programmes)

[www.unipd.it/en/international-joint-master-degrees](http://www.unipd.it/en/international-joint-master-degrees)

[www.time-association.org](http://www.time-association.org)



## INTERNATIONAL EXPERIENCES

### INTERNATIONAL MOBILITY

The University of Padua has been promoting student mobility for over 30 years, deeply convinced of the importance of a life experience abroad in improving communication, language and inter-cultural skills, and gaining valuable soft skills.

All University of Padua students have the opportunity to spend a semester or a full academic year at a partner university either to study or to carry out research.

Thanks to the existence of several bilateral agreements with other universities all over the world, as well as the extensive participation in European programmes for research and education, the University of Padua offers many international opportunities to **study abroad**.

Every year thousands of students take part in mobility programmes or attend international courses, thus having the chance to study new subjects, get to know different cultures and see what other educational systems are like.

The University of Padua is also a significant player in the *Erasmus+ Programme*, which enables students to spend a period abroad at partner universities and attend courses, take exams, prepare dissertations or carry out internships. It also joined the *Swiss European*

*Mobility Programme (SEMP)*, a mobility programme which allows students to spend a study period at a partner university in Switzerland.

The *ICPU – Industry Community Project*, in collaboration with the University of Sydney, is another example of mobility programme that connects students with different educational and disciplinary backgrounds through the development of a case study.

[www.unipd.it/en/erasmus-studies-semb](http://www.unipd.it/en/erasmus-studies-semb)

[www.unipd.it/en/bilateral-agreements-students](http://www.unipd.it/en/bilateral-agreements-students)

[www.unipd.it/en/erasmus-traineeship-mobility](http://www.unipd.it/en/erasmus-traineeship-mobility)

[www.unipd.it/en/icpu](http://www.unipd.it/en/icpu)

### SUMMER AND WINTER SCHOOLS

Top quality intensive courses are jointly organised by the University of Padua with other national and/or international institutions. Lasting up to two weeks, they are addressed to students who hold at least a Bachelor's degree, PhD students, researchers, professionals and public or private sector employees. Activities are usually carried out in English and include workshops, practical exercises, seminars, lab activities and guided tours.

[www.unipd.it/en/summer-and-winter-schools](http://www.unipd.it/en/summer-and-winter-schools)

# WORKING WHILE STUDYING

## WORK OPPORTUNITIES

In accordance with the Italian law, EU students are free to work during their studies; non-EU students with a valid residence permit are allowed to work up to 20 hours/week. The University of Padua offers some part-time jobs, which are advertised in specific public Calls for applications.

[www.unipd.it/en/part-time-job-opportunities](http://www.unipd.it/en/part-time-job-opportunities)

## INTERNSHIPS AND APPRENTICESHIPS

The University of Padua promotes, through the Career Service Office, training periods in companies, public or professional bodies. They are addressed to currently enrolled students (curricular internship), recent university graduates, who can apply within 12 months after earning their degree (extracurricular internship), and unemployed graduates (work placement/reintegration internship).

[www.unipd.it/en/job-placement](http://www.unipd.it/en/job-placement)

# ALUMNI

The Alumni association is a community which connects graduates of different ages, sectors and places where everyone has the same consideration and is granted free access. Motivated by the founding values of the University, alumni are bearers of the *Universa Universitas Patavina Libertas* motto all over the world.

[www.unipd.it/en/alumni](http://www.unipd.it/en/alumni)

# THE CITY OF PADUA

Situated in the heart of north-eastern Italy, and less than 40 km from Venice, Padua is one of the most beautiful cities in Italy, with over 3,000 years of history.

This rich **cultural heritage**, appreciated every year by thousands of tourists, includes the Scrovegni Chapel - with its frescoes painted by Giotto, Prato della Valle - one of the biggest squares in Europe, the thirteenth century Palazzo della Ragione - the world's largest hall without supporting columns, the world's oldest university Botanical Garden - a UNESCO World Heritage Site, and a historical city centre, with picturesque squares, palaces and museums.

Padua offers an extended cycling path network and multiple bike sharing options with special discounts for students.

Thanks also to its close ties with the University, Padua is a lively and dynamic city offering numerous events in the fields of art, music, theatre, cinema and sport throughout the year.

<http://www.unipd.it/en/discovering-padua>

OVER  
**210,000**  
RESIDENTS

OVER  
**23,000**  
BUSINESSES

OVER  
**860,000**  
ITALIAN

OVER  
**1,6 M**  
TOURISTS  
EACH YEAR

OVER  
**740,000**  
INTERNATIONAL

**170KM**  
CYCLING PATH

**28**  
BIKE SHARING  
STATIONS

**600**  
STATION-LESS  
SHARED BIKES







# AGRICULTURAL SCIENCES AND VETERINARY MEDICINE

## Bachelor's degrees (3 years)

Agricultural science and technology

Animal science and technology

Food science and technology

Forestry and environmental technology

Land and landscape restoration and enhancement

Organic crops management

Safety and hygiene of food products

Science and culture of gastronomy and catering

Viticulture and enology science and technology

## Master's degrees (2 years)

Agricultural science and technology

Animal science and technology

Biotechnologies for food science

Food science and technology

Forestry and environmental science

Land and environment science and technology

## Single-cycle degree (5 years)

Veterinary medicine

## Bachelor's degrees (3 years)

Animal care

## Master's degrees (2 years)

Biotechnologies for food science

Forest science\*

Italian food and wine

Sustainable agriculture\*

PLANTHEALTH - Plant health in sustainable cropping systems\*\*

MEDFOR - Mediterranean forestry and natural resources management\*\*

SUTROFOR - Sustainable tropical forest development\*\*

SUFONAMA - Sustainable forest and nature management\*\*

\* Double and/or joint degree available

\*\* Erasmus Mundus Joint Master Degree

■ Italian-taught  
■ English-taught

# LAW

## Bachelor's degrees (3 years)

Employment consultancy

Law and technology (to be approved)

## Single-cycle degree (5 year)

Law\*

# ECONOMICS AND POLITICAL SCIENCE

## Bachelor's degrees (3 years)

Economic law

Economics\*

Political science

Political sciences, international relations, human rights

Social work

## Master's degrees (2 years)

Government sciences and public policies

Innovation and social work

International relations and diplomacy

Law and economics

## Master's degrees (2 years)

Business administration\*

Economics and finance\*

Entrepreneurship and innovation

European and global studies\*

Human rights and multi-level governance\*

\* Double and/or joint degree available

■ Italian-taught  
■ English-taught

# ENGINEERING

## Bachelor's degrees (3 years)

Aerospace engineering

---

Biomedical engineering

---

Chemical and materials engineering

---

Civil engineering

---

Computer engineering

---

Electronic engineering

---

Energy engineering

---

Engineering and management

---

Environmental and land planning engineering

---

Information engineering

---

Mechanical engineering

---

Mechatronic engineering

---

Product innovation engineering

---

Techniques and management of building and land

---

## Single-cycle degree (5 years)

Building engineering and architecture

---

\* Double and/or joint degree available

- Italian-taught
- English-taught

## Master's degrees (2 years)

Aerospace engineering

---

Bioengineering

---

Chemical and process engineering

---

Civil and industrial safety engineering

---

Civil engineering\*

---

Electrical energy engineering

---

Electronic engineering

---

Energy engineering

---

Engineering and management

---

Materials engineering

---

Mechanical engineering

---

Mechatronic engineering

---

Product innovation engineering

---

## Master's degrees (2 years)

Computer Engineering

---

Control Systems Engineering

---

Cybersecurity (to be approved)

---

Environmental engineering\*

---

ICT for internet and multimedia\*

---

Mathematical engineering

---

SteDe - Sustainable territorial development  
(intra University) (En/Fr)\*\*

---

# HUMAN AND SOCIAL SCIENCES AND CULTURAL HERITAGE

## Bachelor's degrees (3 years)

Archaeology

Communication

Cultural tourism planning and management

Educational sciences

History

History and conservation of the artistic and musical heritage

Humanities

Language, literature and cultural communication

Philosophy

Sociological sciences

Visual and performing arts

## Single-cycle degree (5 years)

Primary teacher education

## Master's degrees (2 years)

Local development

TPTI - Techniques, heritage, industrial landscapes  
(intra University) (En/Fr)\*\*

## Master's degrees (2 years)

Archaeological sciences

Classical languages and literatures and ancient history

Cultures, education and global society

European and american languages and literatures

Historical sciences

History of art

Landscape studies (to be approved)

Linguistics

Management of educational services and life long education

Modern languages for international communication and cooperation

Modern philology\*

Philosophical sciences\*

Religious studies (intra University)

Strategies in communication

Theatre, film, television and media studies

\* Double and/or joint degree available

\*\* Erasmus Mundus Joint Master Degree

■ Italian-taught  
■ English-taught

# MEDICINE

## Bachelor's degrees (3 years)

Applied pharmaceutical science

Audioprothesis techniques

Audiometry (to be approved)

Biomedical laboratory techniques

Childhood neuro and psychomotricity

Dental hygiene

Dietistic

Environment and workplace prevention techniques

Health assistance

Human movement sciences

Imaging and radiotherapy techniques

Midwifery

Neurophysiopathology techniques

Nursing

Occupational therapy

Orthoptic and ophthalmologic assistance

Physiotherapy

Professional education

Psychiatric rehabilitation technique

Speech and language therapy

## Master's degrees (2 years)

Health professions of prevention sciences

Health professions of rehabilitation sciences

Health professions of technical sciences (diagnostic)

Nursing and midwifery sciences

Preventive and adapted physical activity

## Master's degrees (2 years)

Medical biotechnologies\*

Pharmaceutical biotechnologies

## Single-cycle degrees

Chemistry and pharmaceutical techniques (5 years)

Medicine and surgery (6 years)

Pharmacy (5 years)

School of dentistry (6 years)

## Single-cycle degree (6 years)

Medicine and surgery

\* Double and/or joint degree available

- Italian-taught
- English-taught

# PSYCHOLOGY

## Bachelor's degrees (3 years)

Cognitive psychology and psychobiology

Developmental, personality and interpersonal relationships psychology

Psychological sciences and techniques

Social and work psychology

## Master's degrees (2 years)

Applied cognitive psychology

Clinical dynamic psychology

Clinical psychology

Developmental and educational psychology

Neuroscience and neuropsychological rehabilitation

Psychology of community, wellness promotion, and social change

Social, work and communication psychology

## Bachelor's degrees (3 years)

Psychological science

## Master's degrees (2 years)

Cognitive neuroscience and clinical neuropsychology



# SCIENCE

## Bachelor's degrees (3 years)

Astronomy

Biology

Biotechnology

Chemistry

Computer science

Environmental sciences and technology

Geological science

Industrial chemistry

Landscape sciences (to be approved)

Materials science

Mathematics

Molecular biology

Natural science

Optics and optometry

Physics

Statistics for economics and business

Statistics for technology and science

## Master's degrees (2 years)

Chemistry\*

Computer science

Evolutionary biology

Geology and technical geology

Industrial biotechnology

Industrial chemistry

Marine biology

Materials science\*

Mathematics (ALGANT\*)

Natural science

Sanitary biology

Statistical sciences

## Master's degrees (2 years)

Astrophysics and cosmology

Cybersecurity (to be approved)

Data science

Geophysics for natural risks and resources (to be approved)

Molecular biology\*

Physics\*

Physics of data

NUPHYS - Nuclear physics\*\*

\* Double and/or joint degree available

\*\* Erasmus Mundus Joint Master Degree

■ Italian-taught

■ English-taught

# PhD COURSES

## Hard Sciences

Astronomy

Fusion science and engineering\*

Geosciences

Industrial engineering

Information engineering

Management engineering and real estate  
Economics

Mathematical sciences

Mechatronics and product innovation engineering

Molecular sciences

Physics

Science and engineering of materials  
and nanostructures

Sciences of civil, environmental and architectural  
engineering

Space sciences, technologies and measurements

Statistical sciences

## Humanities

Economics and management

Human rights, society, and multi-level governance\*

## Interdisciplinary

Brain, mind and computer science

Land, environment, resources, health

## Life Sciences

Animal and food science

Biosciences

Crop science

Psychological sciences

## Medical and Biomedical Sciences

Arterial hypertension and vascular biology (ARHYVAB)\*

Biomedical sciences

Clinical and experimental oncology and  
immunology

Molecular medicine

Neuroscience

Veterinary sciences

\* International joint doctorate Programme

■ English-taught

## Humanities

Historical, geographical, anthropological studies

History, criticism and preservation of cultural heritage

International law and private and labour law

Law

Linguistic, philological and literary sciences

Pedagogical, educational and instructional sciences

Philosophy

## Interdisciplinary

Social sciences: interactions, communication, cultural constructions

## Medical and Biomedical Sciences

Clinical and experimental sciences

Developmental medicine and health planning sciences

Pharmacological sciences

Translational specialistic medicine "G.B. Morgagni"

# OFFICE CONTACT DETAILS

## CALL CENTRE

☎ +39 049.8273131

✉ [callcentre@unipd.it](mailto:callcentre@unipd.it)

Mon - Fri 9am - 5pm

## CAREER SERVICE OFFICE

Palazzo Storione

Riviera Tito Livio 6,

35123 Padua

☎ +39 049.8273075

✉ [stage@unipd.it](mailto:stage@unipd.it)

✉ [placement@unipd.it](mailto:placement@unipd.it)

Mon - Fri 10am - 2pm

Tue and Thu 3 - 5pm

**Telephone office hours:**

Mon - Fri 10am - 1pm

Tue and Thu 3 - 4.30pm

## ESU - AZIENDA REGIONALE PER IL DIRITTO ALLO STUDIO UNIVERSITARIO

Via San Francesco 122,

35121 Padua

☎ +39 049.8235611

✉ [esu@esu.pd.it](mailto:esu@esu.pd.it)

[www.esupd.gov.it/en](http://www.esupd.gov.it/en)

## INTERNATIONAL RELATIONS DIVISION

### ADMISSIONS AND WELCOME UNIT

Palazzo Anselmi - Lungargine del

Piovego 1,

35131 Padua

☎ +39 049.8276831

✉ [international.admission@unipd.it](mailto:international.admission@unipd.it)

(only by appointment)

### MOBILITY UNIT

Palazzo Bo - Via 8 Febbraio 2,

35122 Padua

☎ +39 049.8273061

✉ [erasmus@unipd.it](mailto:erasmus@unipd.it)

Mon - Wed - Fri 10am - 1pm

Tue 10am - 1pm and 3 - 4.30pm

Thu 10am - 3pm

Fri (only by appointment)

### CHINA DESK

Via Venezia 16,

35131 Padua

☎ +39 049.8276788

✉ [china.unipd@unipd.it](mailto:china.unipd@unipd.it)

Mon - Wed - Fri 10am - 1pm

Tue 10am - 1pm and 3 - 4.30pm

Thu 10am - 3pm

Fri (only by appointment)

## PhD AND POST LAUREAM OFFICE PhD

Via Venezia 15,

35131 Padua

☎ +39 049.8271213

✉ [formazione.ricerca@unipd.it](mailto:formazione.ricerca@unipd.it)

Mon - Wed - Fri 10am - 1pm

Tue 10am - 1pm and 3 - 4.30pm

### POST LAUREAM

(short specialisation degrees,  
specialisation degrees)

Via U. Bassi 1, 35131 Padua

☎ +39 049.8276373

✉ [titoliesteri.lauream@unipd.it](mailto:titoliesteri.lauream@unipd.it)

Mon - Wed - Fri 10am - 1pm

Tue 10am - 1pm and 3 - 4.30pm

Thu 10am - 3pm

**Telephone office hours:**

Mon to Fri 10 - 12.30am

## PUBLIC RELATIONS OFFICE - URP

Palazzo Bo - Via 8 Febbraio 2,

35122 Padua

☎ +39 049.8273338

✉ [urp@unipd.it](mailto:urp@unipd.it)

Opening hours:

Mon - Fri 9am - 12.30pm

## SAOS

Palazzo Bo - Via 8 Febbraio 2,  
35122 Padua

☎ +39 049.8273077

✉ [saos@unipd.it](mailto:saos@unipd.it)

Mon and Wed 11.30am - 1pm

Tue 3 - 4.30pm

Thu 1.30 - 3pm

Mon and Wed 10am - 11.30am

(only by appointment)

Skype (saosdesk.unipd):

Tue 5 - 6pm

## STUDENT CAREER OFFICE

### AGRIPOLIS

(School of Agricultural Sciences  
and Veterinary Medicine only)

Viale dell'Università 16,  
35020 Legnaro (PD)

☎ +39 049.8272540

Mon - Fri 10am - 12.30pm

Tue and Thu 3 - 4.30pm

Wed closed

### CASA GRIMANI

(other Schools)

Lungargine del Piovego 2/3,  
35131 Padua

☎ +39 049.8273131

✉ [carriere.studenti@unipd.it](mailto:carriere.studenti@unipd.it)

Mon and Wed 10am - 1pm

Tue 10am - 1pm and 3 - 4.30pm

Thu 10am - 3pm

Fri 10am - 1pm (only by appointment)

## STUDENT SERVICE OFFICE

### ECONOMIC BENEFITS

Via del Portello 31,  
35129 Padua

☎ +39 049.8275035

✉ [benefici.studenti@unipd.it](mailto:benefici.studenti@unipd.it)

Mon and Wed 10am - 1pm,

Tue 10am - 1pm and 3 - 4.30pm,

Thu 10am - 3pm

Fri 10am - 1pm (only by appointment)

### GUIDANCE AND TUTORING

Palazzo Storione

Riviera Tito Livio 6, 35123 Padua

☎ +39 049.8273312

✉ [orienta@unipd.it](mailto:orienta@unipd.it)

✉ [tutorato@unipd.it](mailto:tutorato@unipd.it)

Mon and Wed 10am - 1pm

Tue 10am - 1pm and 3 - 4.30pm

Thu 10am - 3pm

Fri 10am - 1pm (only by appointment)

## INCLUSION

Via del Portello 23,  
35129 Padua

☎ +39 049.8275038

✉ [inclusione.studenti@unipd.it](mailto:inclusione.studenti@unipd.it)

Mon and Wed 10am - 1pm

Tue 10am - 1pm and 3 - 4.30pm

Thu 10am - 3pm

Fri 10am - 1pm (only by appointment)

## UNIVERSITY LANGUAGE CENTRE

Via Venezia 16,  
35131 Padua

☎ +39 049.8276185

[www.cla.unipd.it/en](http://www.cla.unipd.it/en)

## **EDITING**

International Office  
University of Padua

## **GRAPHIC DESIGN**

Communication Office - Communication and Marketing Area  
University of Padua

## **TRANSLATION**

Language Centre  
University of Padua

© 2019 Università degli Studi di Padova  
Content updated as July 2019

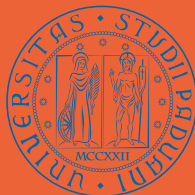
Printed in August 2019 at  
Grafiche Nuova Jolly, Rubano (PD)

Inner pages printed on Favini Shiro Alga Carta, an eco-friendly paper manufactured from the damaging algal blooms pesting Venice lagoon and other fragile marine areas.

UNIVERSA UNIVERSIS PATAVINA LIBERTAS



1222 • 2022  
**800**  
ANNI



UNIVERSITÀ  
DEGLI STUDI  
DI PADOVA



[WWW.UNIPD.IT](http://WWW.UNIPD.IT)